

PLATES

- | | |
|--|------------------------------|
| 1 Padmanabh S. JAINI:
“A Note on the Buddha Image Depicted as the Ninth Avatāra of Viṣṇu” | PLATES 1–2 |
| 2 Oskar von HINÜBER:
“Buddhist Texts and Buddhist Images: New Evidence from Kanaganahalli
(Karnataka/India)” | PLATES 3–6 |
| 3 Oskar von HINÜBER and Peter SKILLING:
“An inscribed Kuṣāṇa Bodhisatva from Vadnagar” | PLATES 7–8 |
| 4 M. Nasim KHAN:
“Fresco Paintings from Yakatoot (Peshawar) Gandhāra” | PLATES 9–11 |
| 5 YE Shaoyong, PENG Jinzhang and LIANG Xushu:
“Sanskrit Fragments of Abhidharma Texts Found in Dunhuang” | PLATES 12–17 |
| 6 Isao KURITA:
“Gandhāran Art (Part 4)” | PLATES 18–25 |

At present, plates 3–6 and 7–8 are not available in this PDF file.
[18, April, 2016]

Fig. 1: The four-armed Buddha in the Queen's Stepwell, photo courtesy of Srinivas Reddy.



Fig. 2: Vāmana-avatāra in the Queen's Stepwell, photo courtesy of Srinivas Reddy.



PLATE 2

Fig. 3: Goddess Sarasvati, figure 12, Uttar Pradesh, Mathura, Kankali Tila 132 [?], cat. 55, in Pal 1994.



Fig. 4: Buddha, “figure 28, outer wall of the main deula, Lord Jagannatha temple, Puri, Orissa,” in Dash 2008.



Fig. 1: Ramanari Buddhist site. Location of the rock shelter (Courtesy Mr. Zafar Hayat)



Fig. 2: Location map of the Yakatoot area

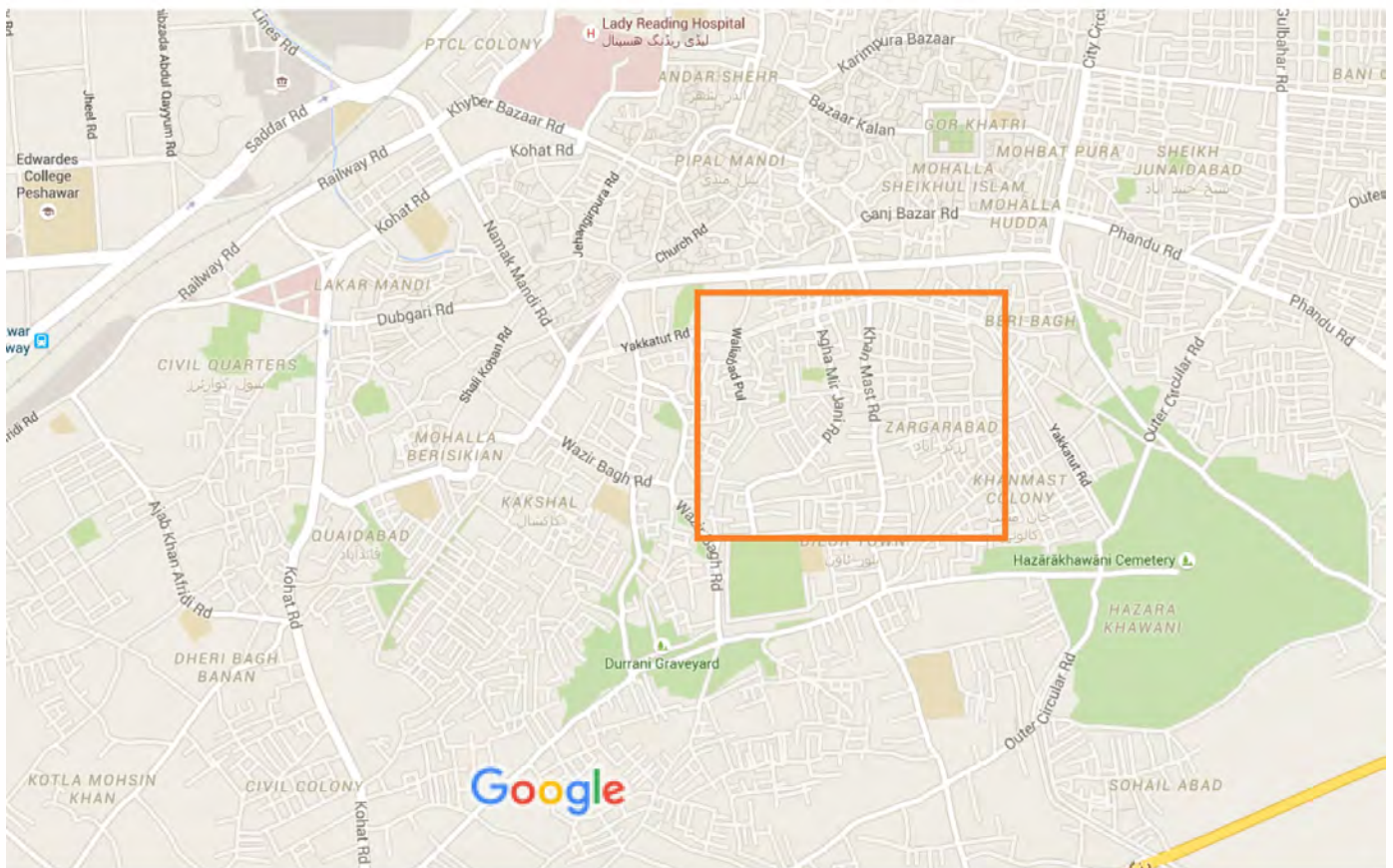


PLATE 10

Fig. 3: Panel showing a couple in adoration and facing left.

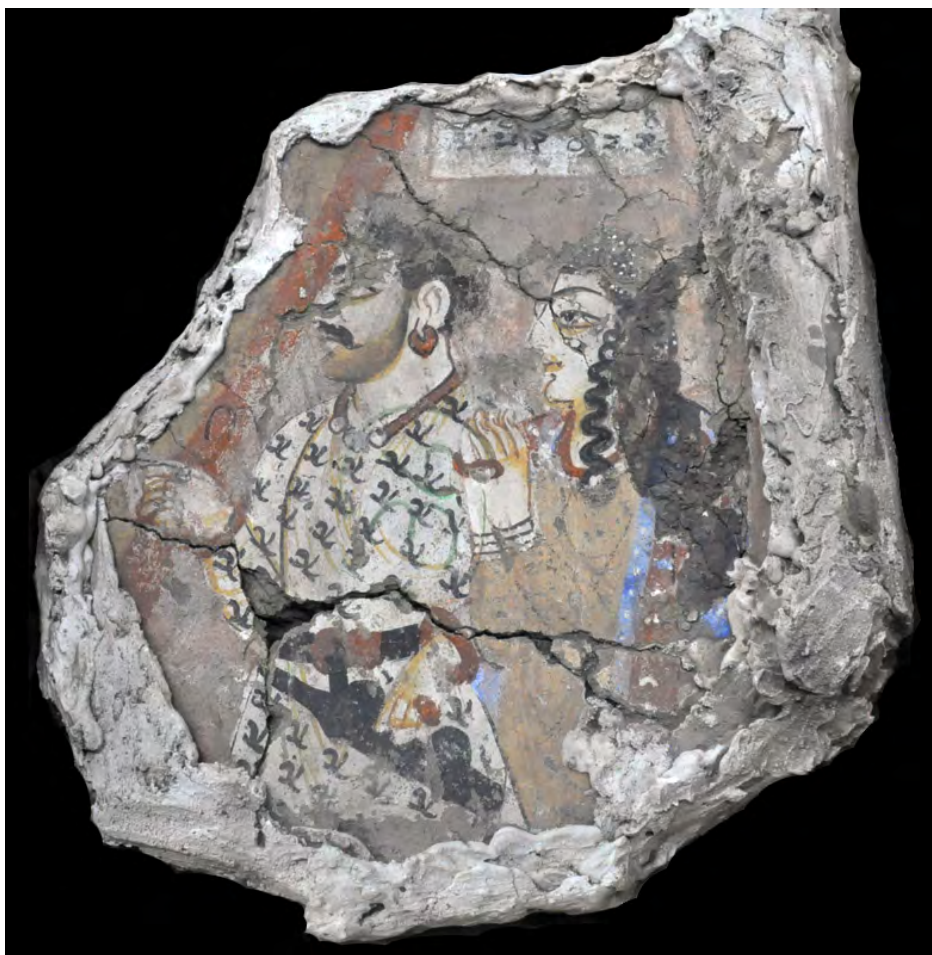


Fig. 4: Figure in *añjali* pose facing left.



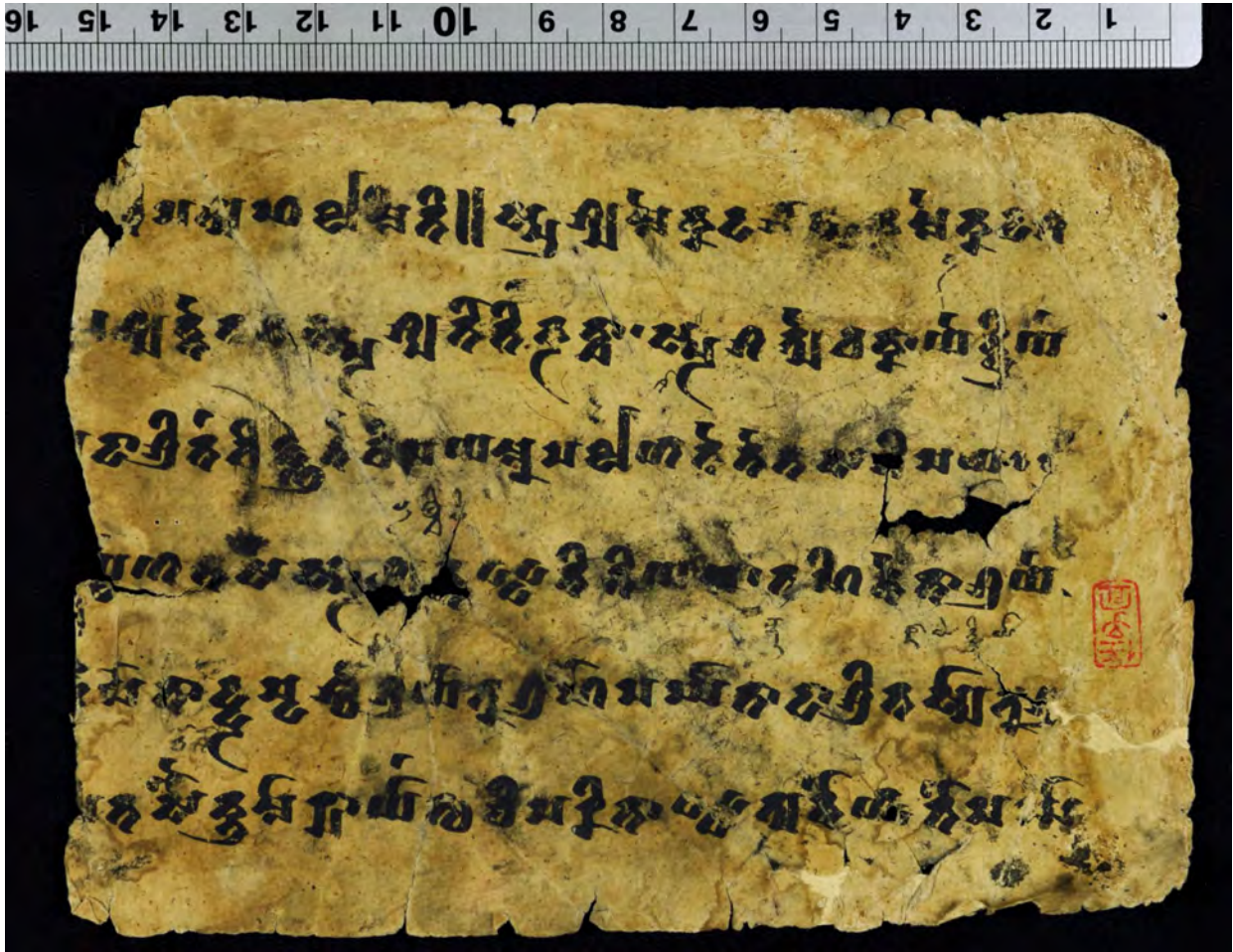
Fig. 5: A couple in *añjali* pose facing left.



Fig. 6: Panel showing probably a bust facing left.



Fragment 1 (D0201): recto



Fragment 1 (D0201): verso

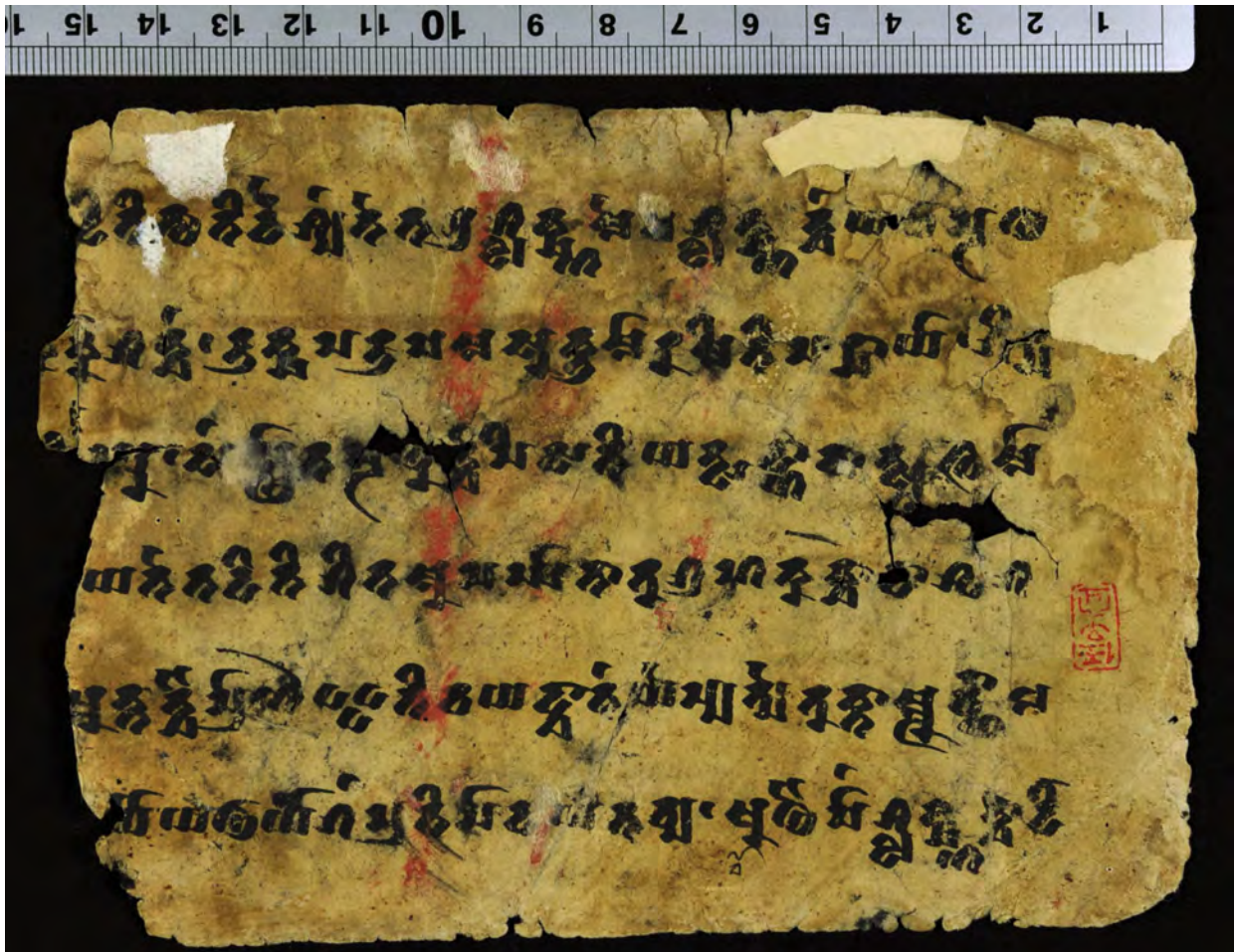
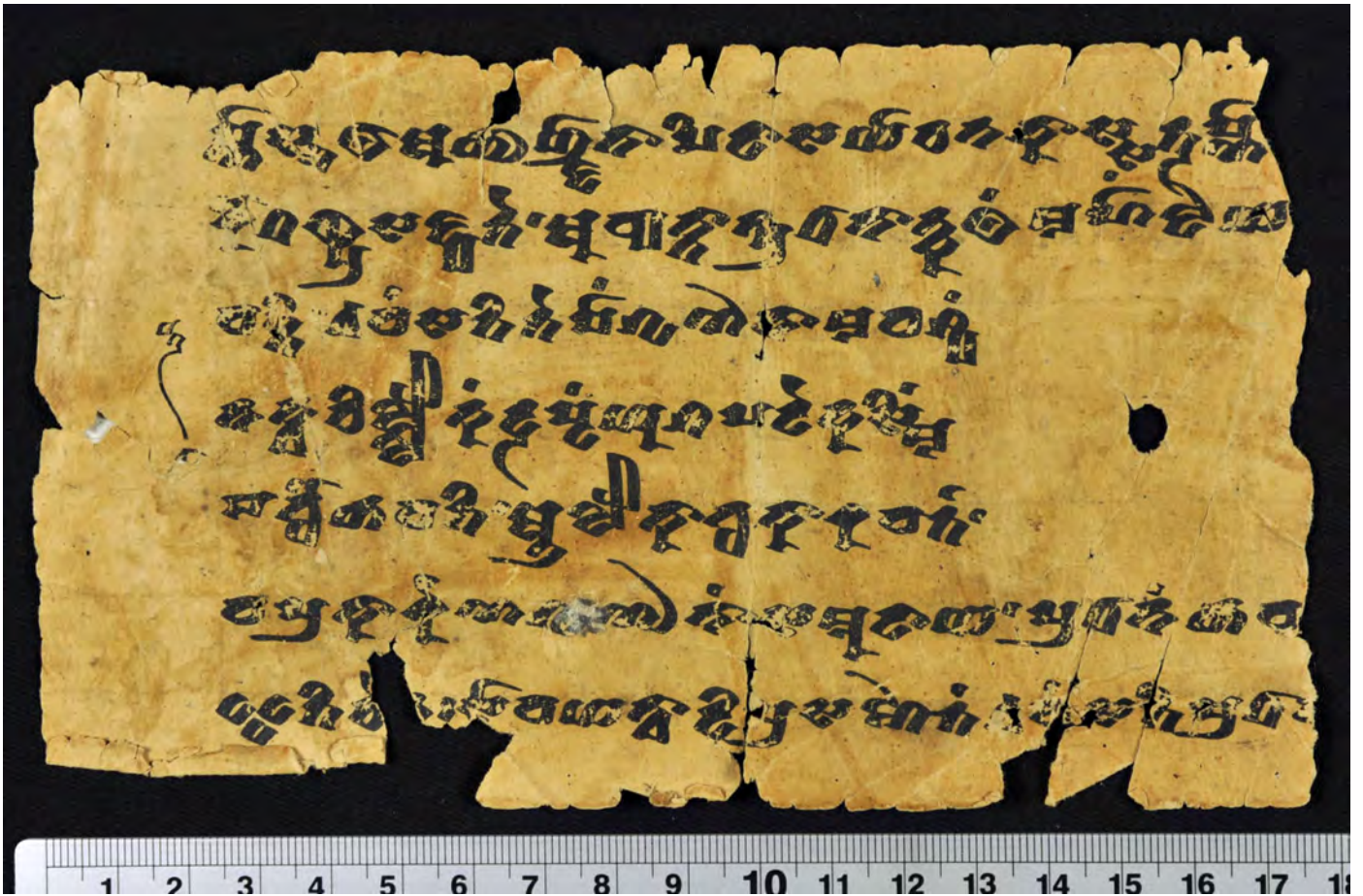


PLATE 13

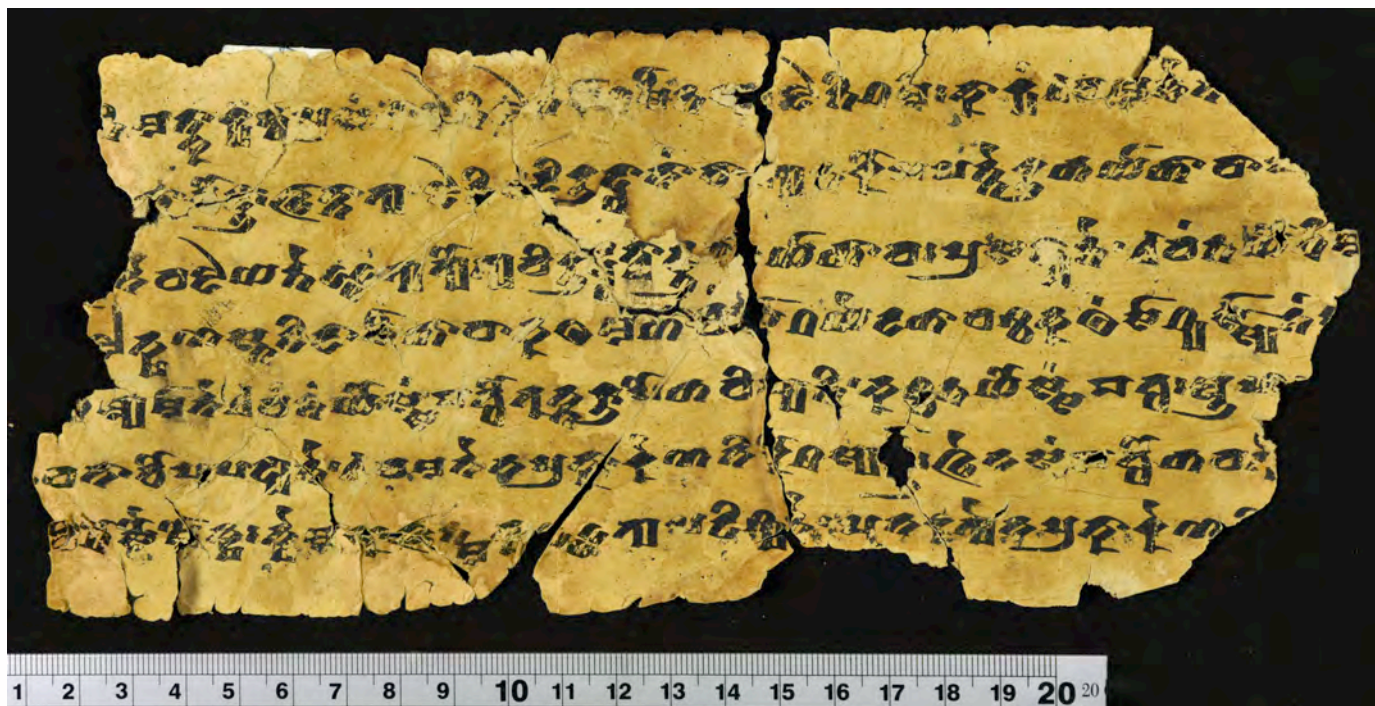
Fragment 2 (D0865): A



Fragment 2 (D0865): B



Fragment 3 (D0866+0867): A



Fragment 3 (D0866+0867): B

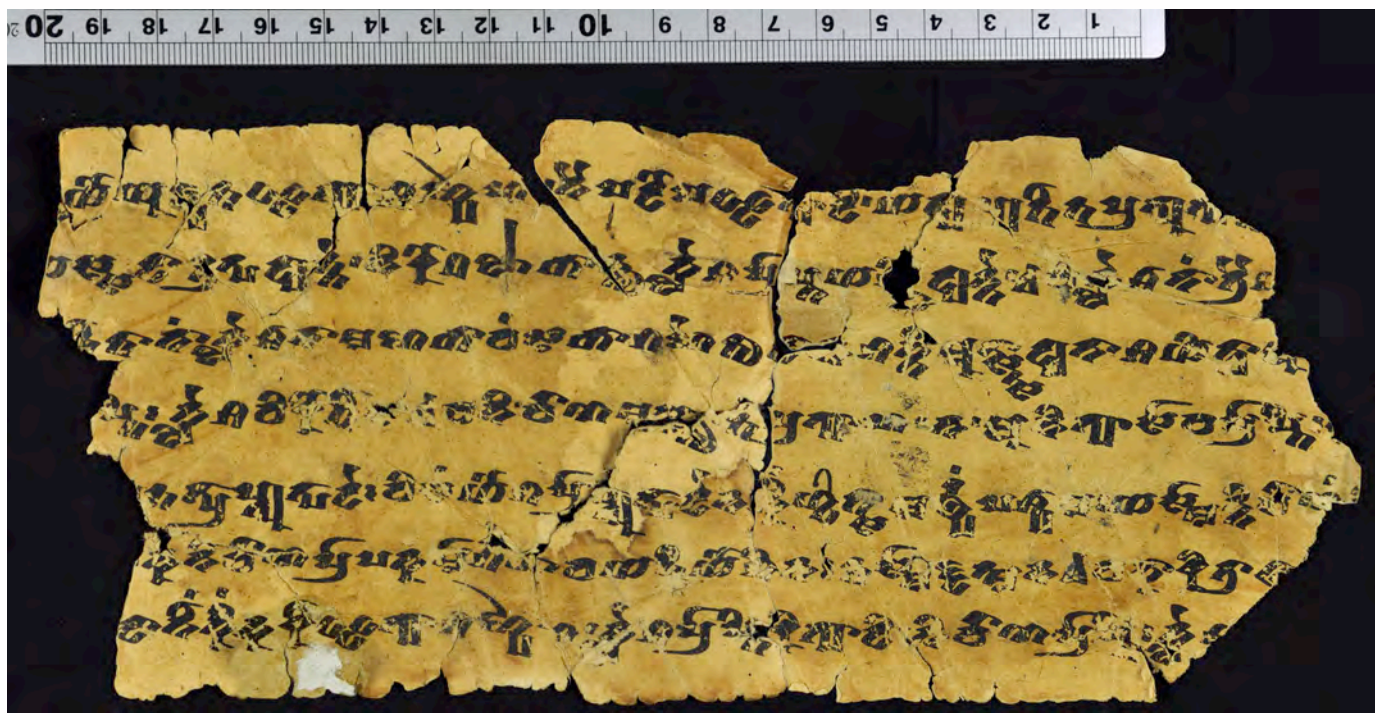
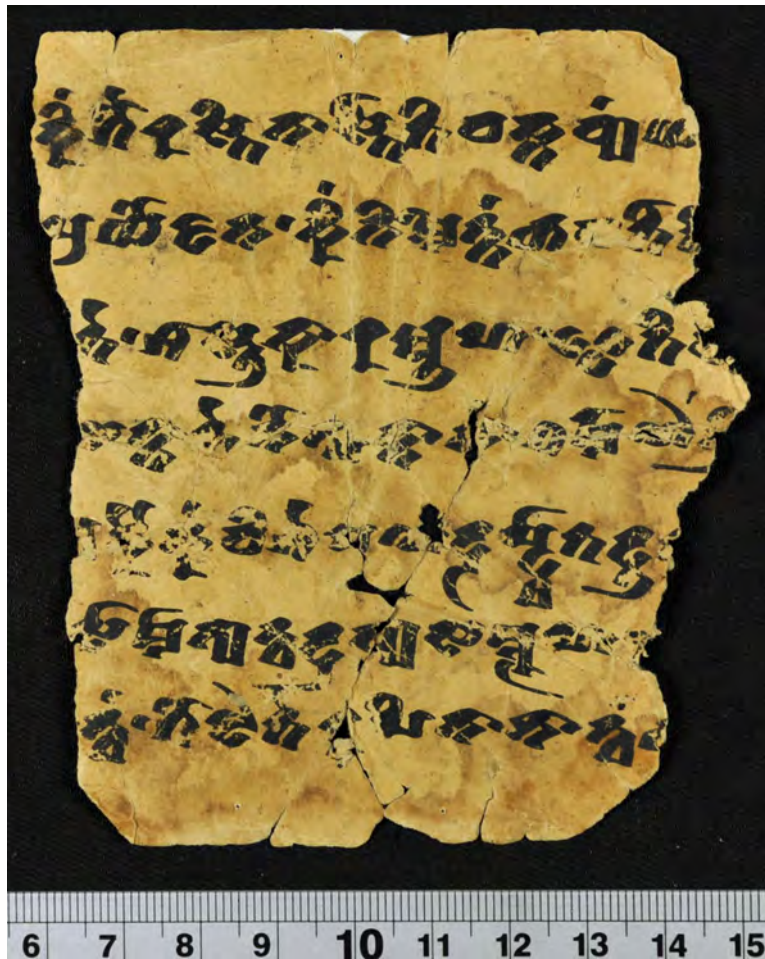
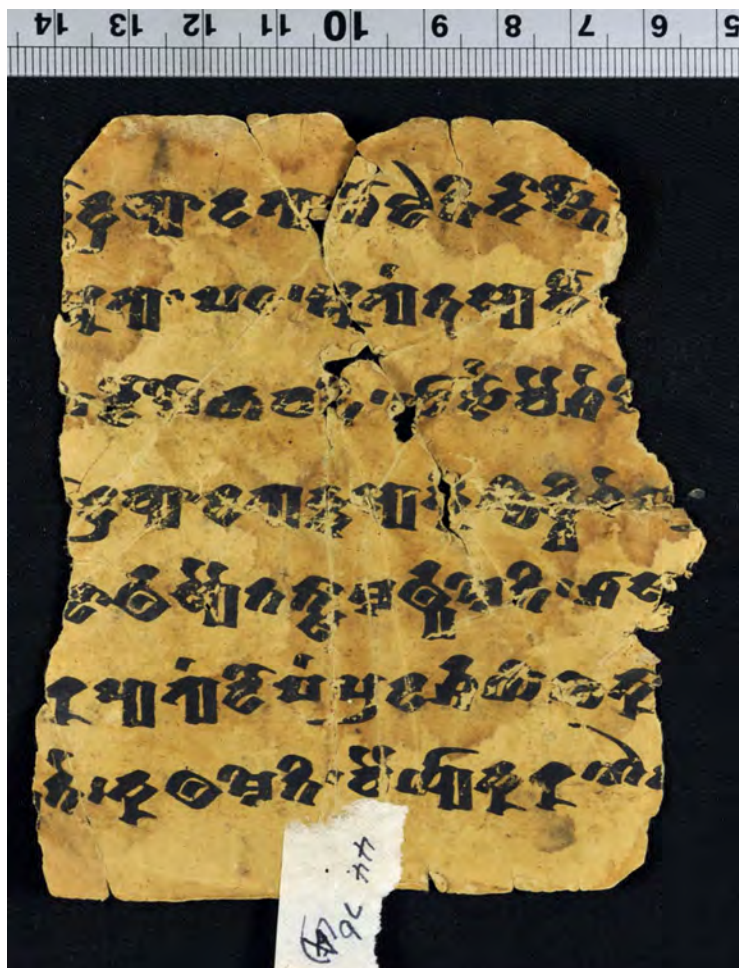


PLATE 15

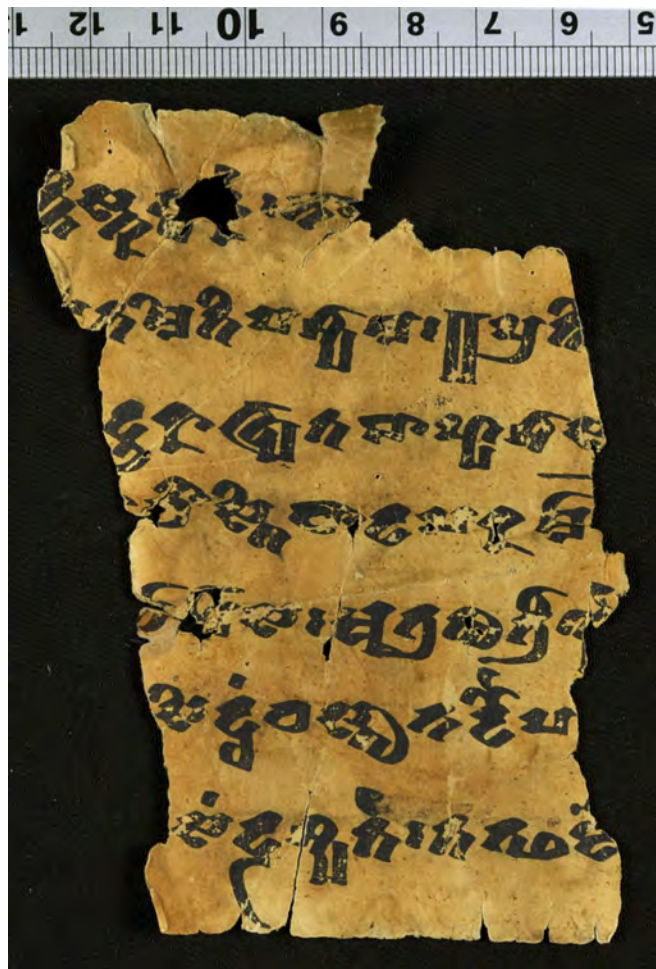
Fragment 4 (D0868): A



Fragment 4 (D0868): B



Fragment 5 (D0869): A



Fragment 5 (D0869): B

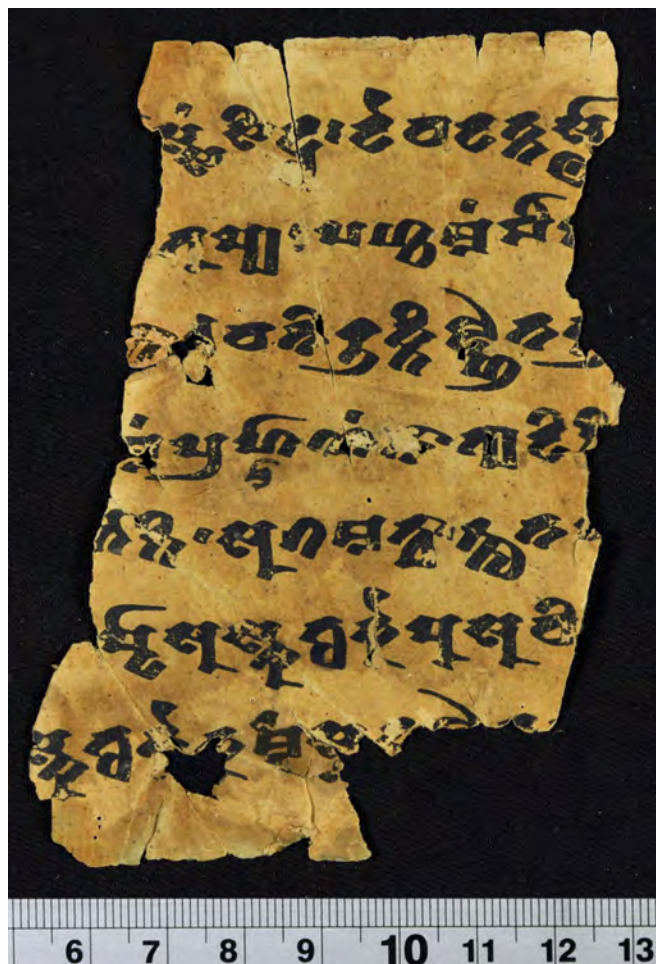
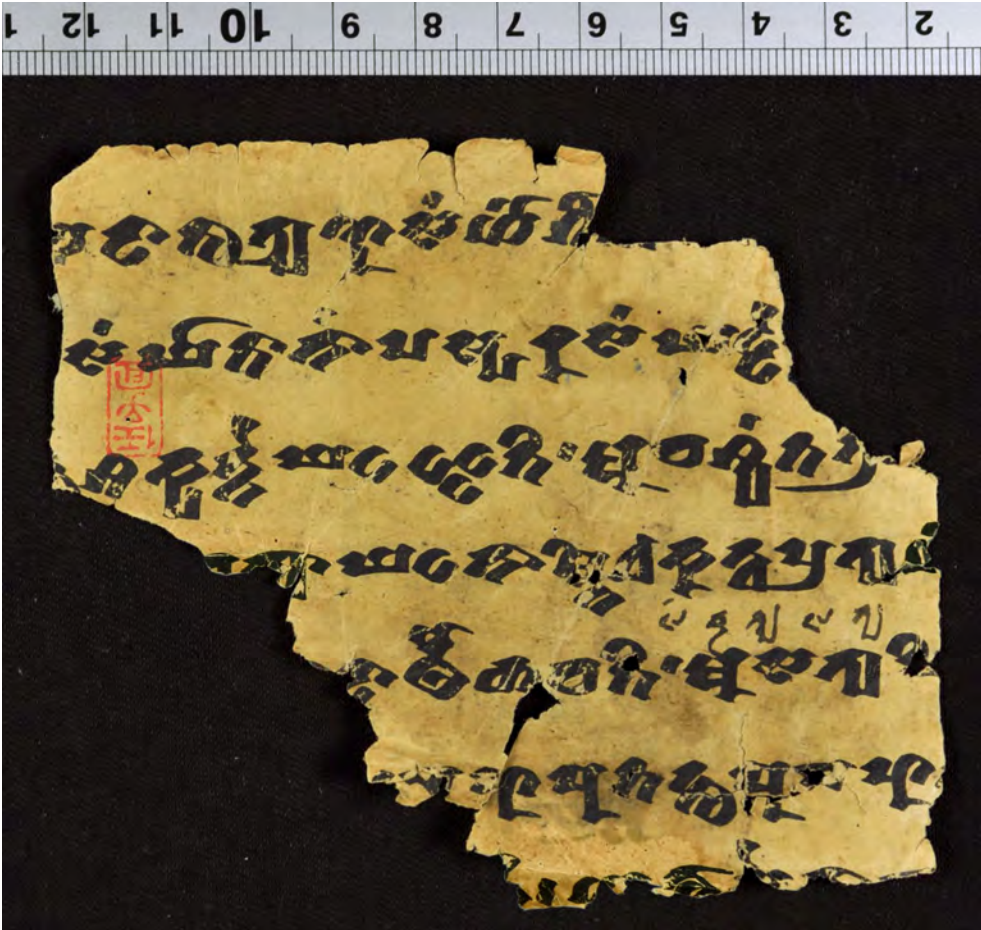


PLATE 17

Fragment 6 (D0871): A



Fragment 6 (D0871): B

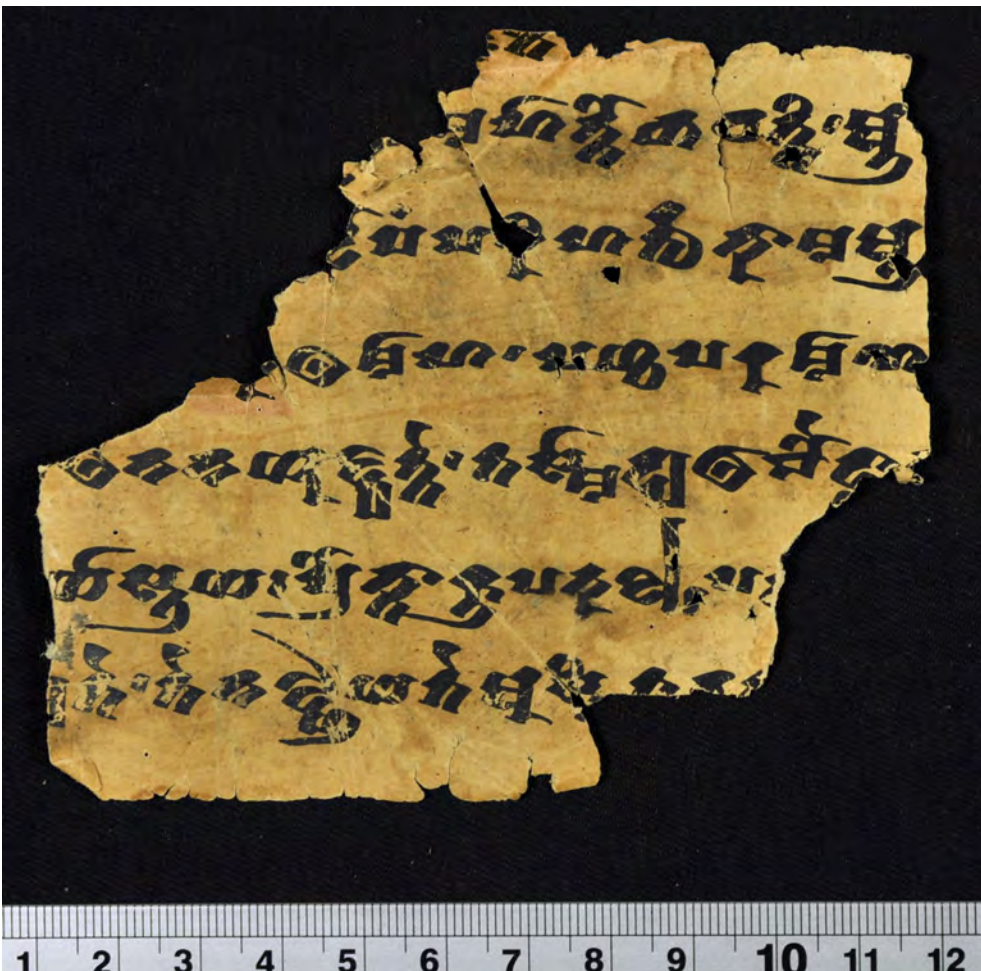


Fig. 1: A Standing Dīpaṅkara Buddha. Gray Schist. h. 124 cm. Private Collection, Japan



PLATE 19

Fig. 2: The Buddha is visiting his family in Kapilavastu. Gray schist. h. 29 cm × w. 40 cm



Fig. 3: The Conversion of King Ajātaśatru. Green schist. h. 29 cm × w. 13 cm. Private Collection, Japan



Fig. 4: The Life of the Prince in the Palace. Green schist. h. 45 cm × w. 16 cm. Private Collection, Japan



Fig. 5: Panel with Stūpas. Gray schist. h. 60 cm



Fig. 6: Incense Burner. Bronze. h. 19 cm



PLATE 21

Fig. 7: Garūḍa. Gray schist. h. 57 cm. Old Private Collection, England



Fig. 8a: Seated Buddha. Gray schist. Private Collection, Japan



Fig. 8b: Seated Buddha. Gray schist. h. 41 cm. Probably from Bajar. Private Collection, Japan



Fig. 9: Seated Buddha. Gray schist. h. 20 cm. Private Collection, Japan

Fig. 10: Seated Buddha. Gray schist. h. 60 cm



Fig. 10a:

Fig. 10b:

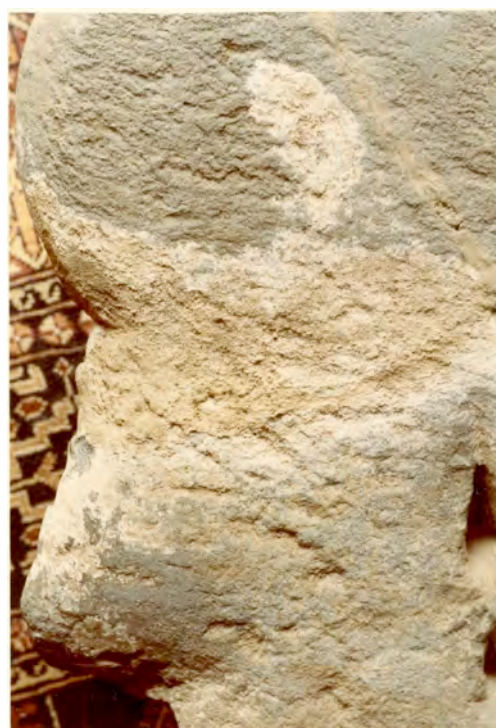


PLATE 23

Fig. 11: Wind God Repoussé. Silver. h. 6 cm. From Afghanistan. Private Collection, Thailand



Fig. 12a: Golden Crowns and the like. Gold and Bronze. Private Collection, Japan



Fig. 12b:



Fig. 12d:



Fig. 12c:



Fig. 12e:



PLATE 25

Fig. 12f:



Fig. 12g:

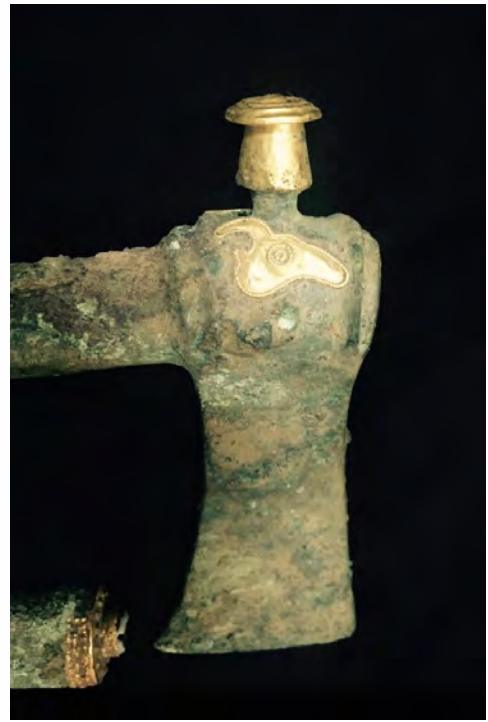


Fig. 12h:



Fig. 12i:

